

# ENTTEC

## Open DMX Ethernet

DMX Ethernet gateway



Controlling your lights remotely using Ethernet or Wifi network has never been easier with the ODE. Simple to use and reliable it also allows you to interface popular Iphone, Ipad applications to your lights. The ODE is also perfect for distributing DMX signals over standard computer networks Cat5.

DISCLAIMER This brochure is for general marketing purposes only and should not be relied upon as being complete or accurate.

[www.enttec.com](http://www.enttec.com)

Controls . Lights . Solutions

ENTTEC PTY LTD  
Head office : 7 Macro Court  
Rowville VIC 3178 Australia  
Tel : +61 3 9763 5755  
Fax : +61 3 9763 5688  
sales@enttec.com

ENTTEC EUROPE  
F22-26 Parkhall Business Centre  
40 Martell Road  
London SE21 8EN, UK  
Tel : +44(0) 2070616210  
sales@enttec.co.uk

ENTTEC AMERICAS  
604A Cornerstone Ct.  
Hillsborough NC27278 USA  
Tel & Fax : (888) 454-5922  
sales.americas@enttec.com

# Open DMX Ethernet

Save time & effort !

Born from the Open DMX USB and the DMX USB PRO, the ODE is the industry's first affordable DMX Ethernet gateway.

Out of the box, the ODE is configured as an Art-Net output node on universe 0:0 but can be easily and quickly changed using the free NMU tool. This means there are no dip-switches or thumb wheels to worry about on the ODE.

## ► Features

- 10/100 Ethernet port
- Supports Art-Net and ESP
- 1 Input and 1 output connector
- Status, direction, and link LEDs
- Ethercon connector
- 7.5V DC jack
- ARM 32-bit processor
- Upgradeable firmware
- Power over Ethernet (POE model)

## ► Hardware

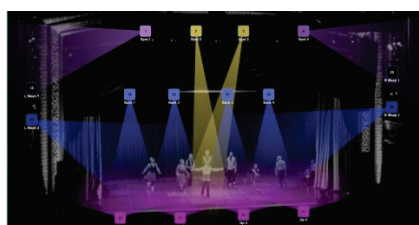
- Tabletop or truss mountable with optional truss bracket
- 1 DMX input connector
- 1 DMX output connector
- 1 RJ45 Ethernet connection
- External plug pack (regular model)
- Configured with free Node Management Utility (over Ethernet connection)

## ► Recommended App

### • D-Pro :



ENTTEC and db Audiware present D-PRO, a software based lighting controller which plays well with a host of different professional level hardware devices from ENTTEC. It has plenty of advanced features for the most demanding lighting professional, allowing for control of up to 8 universes worth of DMX512 data, and it packs more than a few innovations.



## ► 3rd party App

### • Luminair

Wirelessly control, view and manage intelligent DMX lighting fixtures and consoles, straight from iPhone or iPad using Art-Net over a Wi-Fi connection.



### • LightingPad

Perfect tool for controlling small shows, or for installing and testing lighting systems.



### • Elios

Compatible with Windows, Mac and Linux. Integrated web server for remote use from a Smartphone. Use of ArtNet protocol (DMX command via ArtNet to DMX boxes).



## ► Applications

- Output for Ethernet-enabled lighting consoles
- Output for PC-based lighting controllers
- Input for lighting visualisers
- Input and output to carry one of multiple universes of DMX data over Cat-5 wiring

## TRUSS MOUNT KIT



## Dimensions

H40mm/1.58" W130mm/5.12" D60mm/2.36"

## PART NUMBERS

70305 - ODE regular

70306 - ODE POE (Power Over Ethernet)

79111 - Truss Mount Kit

79104 - Universal Power Supply

